





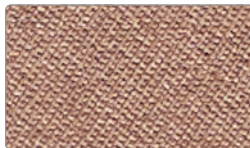
Cadence
AC-64063 Pebble #4



Majorca
AC-62985 Bisque #66



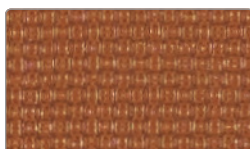
Insight
AC-63547 Cocoa #28



Encore
AC-63732 Cocoa #23



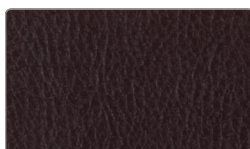
Atmosphere
AC-63890 Truffle #11



Tailored
AC-64095 Terracotta #6



Transform
AC-64138 Blossom #9



Bronco
AC-69375 Claret #16



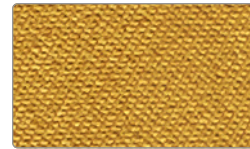
Cavo
AC-63204 Taupe #5



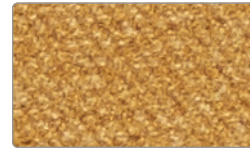
Sherlock
AC-61955 Bark #16



Evolution
AC-63953 Tangerine #5



Encore
AC-63712 Dijon #3



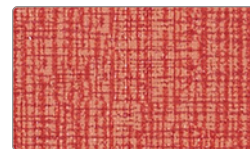
Transform
AC-64134 Sunflower #5



Transform
AC-64147 Goldenrod #18



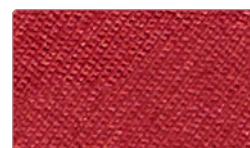
Emerson
AC-63382 Coral #13



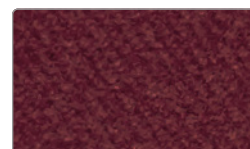
Engrave
AC-64029 Coral #20



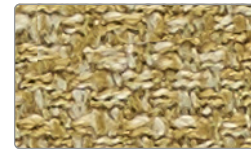
Atmosphere
AC-63884 Chili Pepper #5



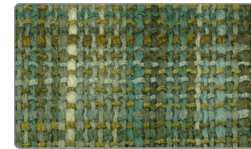
Encore
AC-63726 Garnet #17



Transform
AC-64137 Berry #8



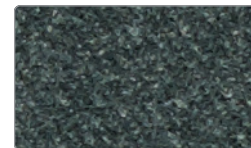
Soho
AC-64169 Lime #10



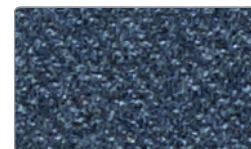
Apollo
AC-63359 Grass #10



Drifter
AC-63625 Pine #16



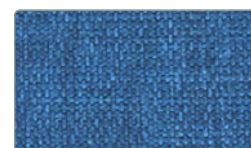
Transform
AC-64140 Forest #11



Transform
AC-64141 Mallard #12



Hush
AC-62129 Turquoise #20



Insight
AC-63535 Marine #16



Intaglio 2
AC-61427 Federal #38



Evolution
AC-63955 Forest #7



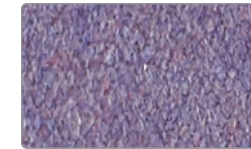
Sherlock 2
AC-63131 Blueberry #18



Cavo
AC-63201 Smoke #2



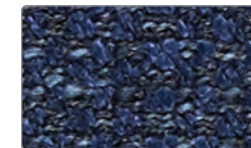
Emerson
AC-63379 Lilac #10



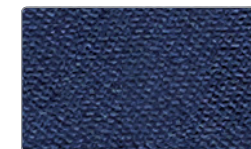
Hush
AC-62131 Lavender #22



Sherlock
AC-61941 Purple Rain #2



Soho
AC-64173 Midnight #14



Encore
AC-63723 Midnight #14



Transform
AC-64149 Stone #20



Watson
AC-63934 Coal #15



Drifter
AC-63632 Onyx #23

TECHNICAL INFORMATION

54" Pattern	Approx. Repeat	Fiber Content & Finish	Abrasion (Wyzenbeek*)	Lightfastness (AATCC Method 16)	Cleaning Code
APOLLO	V-none H-none	100% Polyester CRYPTON®	150,000 D.R.	40 hours	WS/BC
ATMOSPHERE	V-none H-none	100% Polyester Stain Resistant, Acrylic Backing	150,000 D.R.	40 hours	WS
BRONCO	V-none H-none	100% Polyurethane Face, 100% Polyester Knit Back AEGIS, Stain Resistant	500,000 D.R.	120 hours	WS/BC
CADENCE	V-none H-none	98% Polyurethane, 2% Silicone Face, 100% Polyester Back WriteOut® Ink Resistant	200,000 D.R.	200 hours	WS/BC
CAVO	V-none H-none	66% Polyacrylic, 34% Polyester Stain Resistant, Acrylic Backing	55,000 D.R.	40 hours	WS/BC
DRIFTER	V-none H-none	100% Phthalate Free Vinyl Face, 100% Polyester Back Resilience ^{SR} Stain Resistant	300,000 D.R.	200 hours	WS/BC
EMERSON	V-none H-none	100% Polyester Stain Resistant, Acrylic Backing	150,000 D.R.	40 hours	WS
ENCORE	V-none H-none	100% Polyester Stain Resistant	75,000 D.R.	40 hours	S
ENGRAVE®	V-none H-none	95% Polyurethane, 5% Silicone Face, 100% Polyester Back WriteOut® Ink Resistant	300,000 D.R.	200 hours	WS/BC
EVOLUTION®	V-11 ½" H-¼"	63% Polyester, 37% Acrylic Stain Resistant, Acrylic Backing	125,000 D.R.	40 hours	WS/BC
HUSH	V-none H-none	70% Wool, 20% Polyester, 5% Acrylic, 5% Nylon	100,000 D.R.	40 hours	S
INSIGHT	V-none H-none	100% Phthalate Free Vinyl Face, 100% Polyester Back Stain Resistant	300,000 D.R.	200 hours	WS/BC
INTAGLIO 2	V-none H-none	100% Polyurethane Face, 100% Polyester Knit Back AEGIS, Stain Resistant	500,000 D.R.	150 hours	WS/BC
MAJORCA	V-none H-none	100% Silicone Face, 100% Polyester Back	145,000 D.R.	1,000 hours	WS/BC
SHERLOCK/ SHERLOCK 2	V-none H-none	73% Polyester, 27% Viscose alta™ performance technology, Acrylic Backing	150,000 D.R.	40 hours	WS
SOHO	V-none H-none	50% Polyester, 50% Acrylic Stain Resistant, Acrylic Backing	150,000 D.R.	40 hours	WS
TAILORED	V-none H-none	95% Polyurethane, 5% Silicone Face, 100% Polyester Back WriteOut® Ink Resistant	300,000 D.R.	200 hours	WS/BC
TRANSFORM	V-none H-none	100% Polyester Stain Resistant, Acrylic Backing	100,000 D.R.	60 hours	WS/BC
WATSON	V-none H-none Shown Railroaded	68% Olefin, 32% Polyester Stain Resistant, Acrylic Backing	110,000 D.R.	40 hours	WS/BC

Cleaning Codes:

S - Only mild pure water-free dry cleaning solvents may be used.
 WS - Water based cleaning agents or foam may be used.
 BC - May be cleaned with bleach following the proper ratio of water and bleach.
 Cleaning by a professional service is recommended.

This card represents only a select sampling of the Arc|Com fabrics available. For the complete selection of patterns and colorways and/or samples of our specific fabrics visit our website at arc-com.com or contact Arc|Com.

See Arc|Com Textile samples for specific technical data.



*Multiple factors affect fabric durability and appearance retention, including end-user application and proper maintenance. Wyzenbeek results above 100,000 double rubs have not been shown to be an indicator of increased lifespan.



nightingalechairs.com
 800 363 8954



arc-com.com
 800 223 5466